



BEFORE

1. Ensure you have access to flashlights and batteries in your work areas.

DURING

1. In the event of a power outage, remain calm and take steps to ensure your safety and the safety of those around you.
2. Tune radios to KWAX (91.1 in Eugene) or KWVA (88.1 in Eugene) or visit alerts.uoregon.edu for information about prolonged outages.
3. Follow instructions from emergency personnel.
4. If in doubt about the safety of an area, evacuate immediately.
5. Do not use candles or open flames as a light source.
6. In areas with poor natural lighting, evacuate immediately.
7. Do not use elevators.

People Trapped in Elevators

1. Keep yourself and those around you calm.
2. Call UOPD at 541-346-2919 or use the elevator call button / telephone.

Laboratory procedures

1. Close the sashes on all chemical fume hoods as quickly as possible.
2. If safe to do so, secure all experiments, chemicals, and critical equipment prior to evacuating. Close doors behind you.
3. If chemical odors persist, contact Environmental Health and Safety at 541-346-3192 for atmospheric monitoring prior to re-occupancy.

AFTER

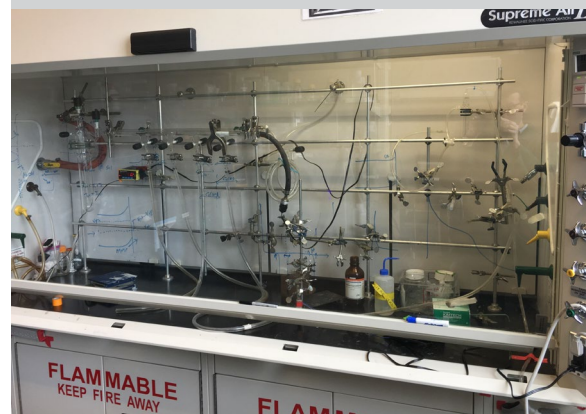
1. Notify one of the following to report a minor, localized power outage:
2. CPFM at 541-346-2319 during business hours.
3. UOPD at 541-346-2919 after hours, weekends, and holidays.



Evacuate, do not use elevators.



Do not use an open flame for light.



In the laboratory, close fume hoods, secure experiments, and evacuate.

