

IMT COVID-19 Objectives:

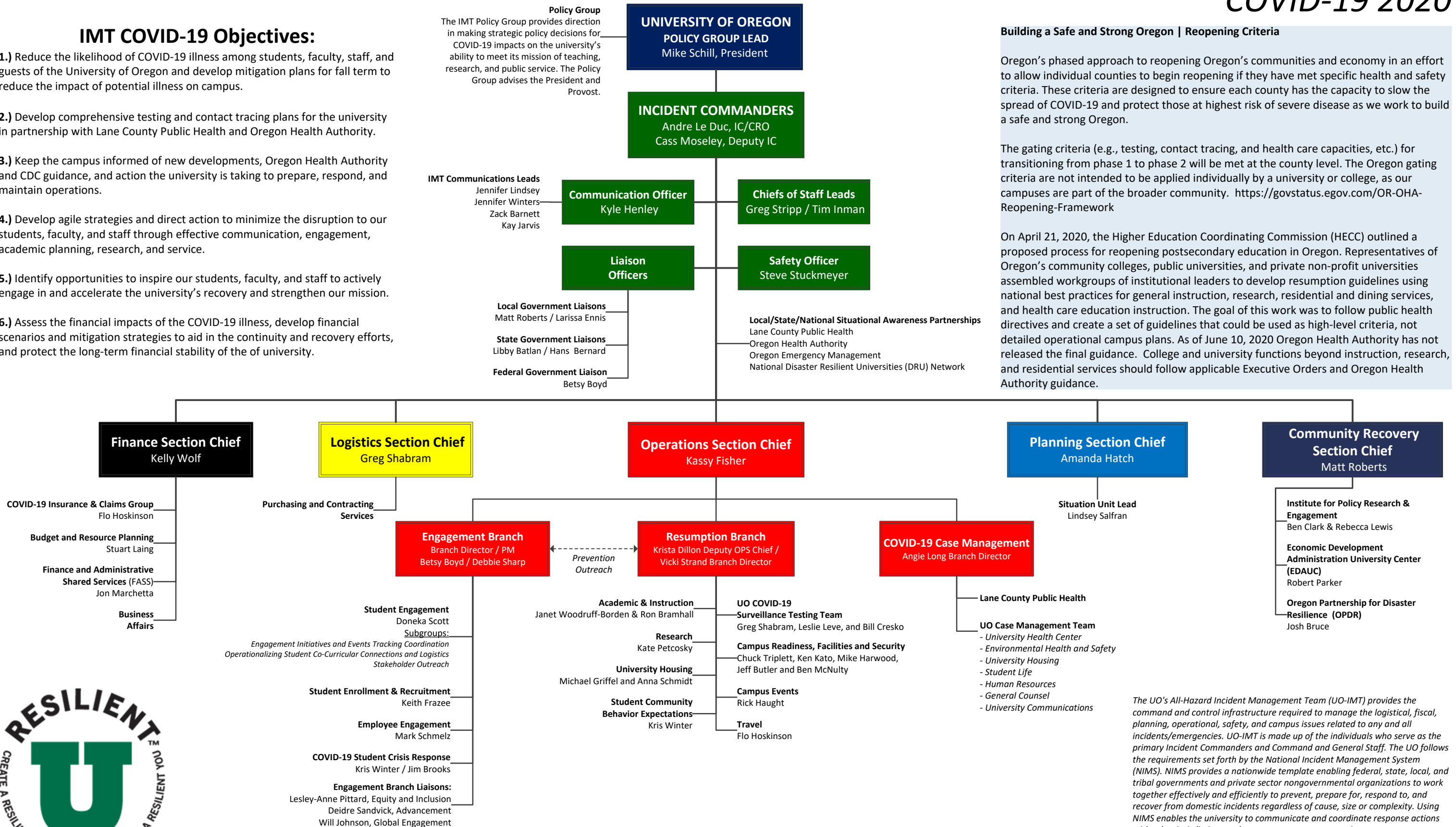
- 1.) Reduce the likelihood of COVID-19 illness among students, faculty, staff, and guests of the University of Oregon and develop mitigation plans for fall term to reduce the impact of potential illness on campus.
- 2.) Develop comprehensive testing and contact tracing plans for the university in partnership with Lane County Public Health and Oregon Health Authority.
- 3.) Keep the campus informed of new developments, Oregon Health Authority and CDC guidance, and action the university is taking to prepare, respond, and maintain operations.
- 4.) Develop agile strategies and direct action to minimize the disruption to our students, faculty, and staff through effective communication, engagement, academic planning, research, and service.
- 5.) Identify opportunities to inspire our students, faculty, and staff to actively engage in and accelerate the university's recovery and strengthen our mission.
- 6.) Assess the financial impacts of the COVID-19 illness, develop financial scenarios and mitigation strategies to aid in the continuity and recovery efforts, and protect the long-term financial stability of the of university.

Building a Safe and Strong Oregon | Reopening Criteria

Oregon's phased approach to reopening Oregon's communities and economy in an effort to allow individual counties to begin reopening if they have met specific health and safety criteria. These criteria are designed to ensure each county has the capacity to slow the spread of COVID-19 and protect those at highest risk of severe disease as we work to build a safe and strong Oregon.

The gating criteria (e.g., testing, contact tracing, and health care capacities, etc.) for transitioning from phase 1 to phase 2 will be met at the county level. The Oregon gating criteria are not intended to be applied individually by a university or college, as our campuses are part of the broader community. <https://govstatus.egov.com/OR-OHA-Reopening-Framework>

On April 21, 2020, the Higher Education Coordinating Commission (HECC) outlined a proposed process for reopening postsecondary education in Oregon. Representatives of Oregon's community colleges, public universities, and private non-profit universities assembled workgroups of institutional leaders to develop resumption guidelines using national best practices for general instruction, research, residential and dining services, and health care education instruction. The goal of this work was to follow public health directives and create a set of guidelines that could be used as high-level criteria, not detailed operational campus plans. As of June 10, 2020 Oregon Health Authority has not released the final guidance. College and university functions beyond instruction, research, and residential services should follow applicable Executive Orders and Oregon Health Authority guidance.



The UO's All-Hazard Incident Management Team (UO-IMT) provides the command and control infrastructure required to manage the logistical, fiscal, planning, operational, safety, and campus issues related to any and all incidents/emergencies. UO-IMT is made up of the individuals who serve as the primary Incident Commanders and Command and General Staff. The UO follows the requirements set forth by the National Incident Management System (NIMS). NIMS provides a nationwide template enabling federal, state, local, and tribal governments and private sector nongovernmental organizations to work together effectively and efficiently to prevent, prepare for, respond to, and recover from domestic incidents regardless of cause, size or complexity. Using NIMS enables the university to communicate and coordinate response actions with other jurisdictions and emergency response agencies.