

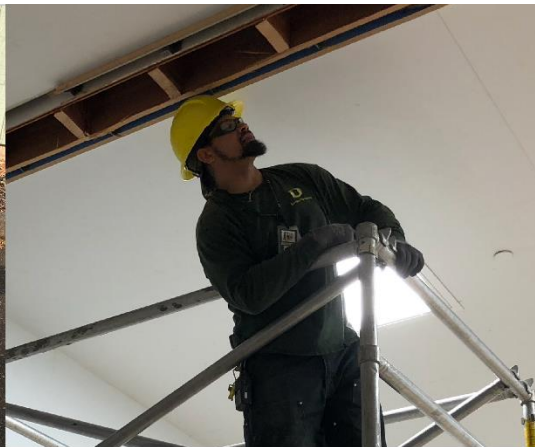


EYE AND FACE

Injuries can be life changing. Injuries can result from flying particles, falling or shifting debris, chemical splash, release of liquids or gases under pressure, and harmful UV or infrared radiation. At the UO, many routine tasks such as using a chain saw, grinder, or table saw present the potential for a serious injury from impact. Tasks like mixing cleaning chemicals, servicing a pump, or changing out piping could result in a splash of liquid to the eyes. To protect employees during these kinds of tasks PPE (personal protective equipment) is used including: safety glasses, safety goggles, and face shields. Depending on the task glasses, goggles, or face shield may be filtered.

Safety glasses are designed to protect the wearer from impact injuries to the eyes, while safety goggles protect from liquid splashes. Face shields may be used in addition to safety glasses or goggles to protect the face. Employees who wear prescription glasses must wear safety glasses designed to fit over prescription glasses, wear goggles over prescription glasses, or wear prescription safety glasses. Be aware that regular prescription glasses or sunglasses DO NOT meet the safety protection requirements for safety glasses. Only glasses marked with the code ANSI Z87.1 are considered safe.

Not all eye and face PPE work for all hazards. The first step to protecting your eyes and face is to understand the hazards associated with the task. Check with your supervisor, read manufacturer’s instructions, or use the examples below to select the correct eye and face protection for each task.



EYE/FACE PPE:	PROTECTION AGAINST	EXAMPLES
<ul style="list-style-type: none"> • Safety Glasses • Safety Goggles • Face Shields • Filtered Lenses 	<ul style="list-style-type: none"> • Impact Hazards • Liquid Splashes • Impact Hazards • Ultraviolet and Infrared light 	<ul style="list-style-type: none"> • Wearing in areas where others are working • Mixing chemicals • Bench or hand-held grinder, chainsaw use • Working with lasers and conducting hot work (pick the correct filter for the type of work you are doing)

WHAT TO DO!

- Understand your job's hazards and select appropriate eye/face PPE before starting work.
- Inspect PPE before every use! Replace if damaged or scratches prevent good visibility.
- Prescription safety glasses must have side shields to protect the worker.
- Talk with your supervisor if you need prescription safety glasses.
- Contact EHS with additional questions about PPE recommendations for a task.

